

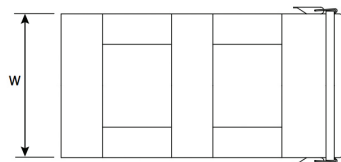
Top Loading Fire Extinguisher Cases 4.5kg - 9kg

Product Information

- Designed specifically to hold 4.5kg - 9kg Dry Powder Extinguisher
- Ideal for general fitment, or when space is at a premium
- Suitable for surface mounting or under hanging fitment
- 4 different fitment configurations possible
- Quick release lid which falls clear of the box for fast access.
- Lightweight Polyethylene construction, good chemical and impact resistance, fitted with waterproof seal
- Available with or without the Universal Fitting Kit

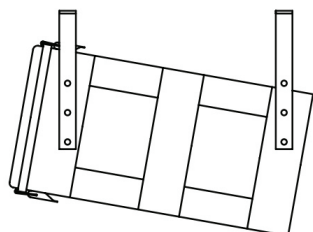


Part No.	Width (W)	Height (H)	Depth (D)	Description
CPTL231	285mm	510mm	220mm	Extinguisher Case – Suits 4.5kg-6kg fire extinguisher
CPTL231FB				Fixing bracket to suit CPTL231
CPTL19E	280mm	510mm	220mm	Extinguisher Case – Suits 4.5kg-6kg
CPTL19FK	280mm	510mm	220mm	As CPTL19E, includes Universal Fixing Kit
CPTL20E	280mm	650mm	240mm	Extinguisher Case – Suits 9kg
CPTL20EFK	280mm	650mm	240mm	As CPTL20E, includes Universal Fixing Kit
CPTLUFK –		–	–	Universal Fitting Kit – Suits both CPTL19E and CPTL20E



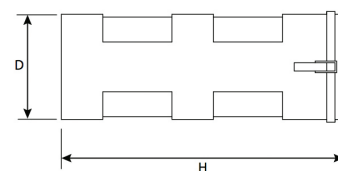
Narrow Hanging Use

- 4 x L shape brackets
- 4 x backplates
- 8 x M8 bolts & nyloc nuts



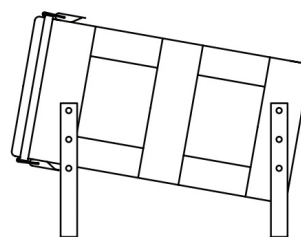
Wide Hanging Use

- 4 x L shape brackets
- 4 x backplates
- 8 x M8 bolts & nyloc nuts



Narrow Surface Mount Use

- 4 x L shape brackets
- 4 x backplates
- 8 x M8 bolts & nyloc nuts



Wide Surface Mount Use

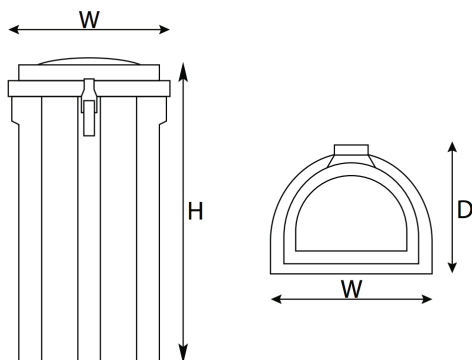
- 4 x L shape brackets
- 2 x backplates
- 2 x washers (front fixing points)
- 4 x M8 bolts & nyloc nuts

Top Loading Fire Extinguisher Case



Product Information

- Lightweight – manufactured from Polyethylene
- High chemical and impact resistance
- Waterproof seal
- Internal Extinguisher restraining strap
- Easy fitment
- All fixings coated with anti-corrosive protection

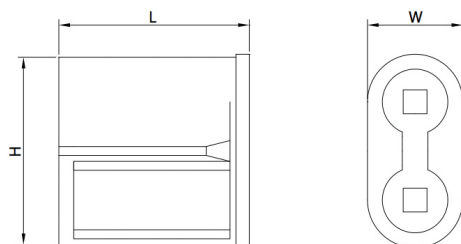


Part No.	Width (W)	Height (H)	Depth (D)	Description
CPTL18EFK	310mm	675mm	280mm	Top Loading Spill Kit Case Complete with all Bracketry
CPTL18E	310mm	675mm	280mm	Top Loading Fire Extinguisher Case Only
CPTL18FB				— — — Fixing Bracket Kit to suit CPTL18E
Compatible with most 4.5kg - 9kg Fire Extinguishers				

Extinguisher & Spill Kit Combi-Box

Product Information

- Dual Purpose Extinguisher and Spill Kit Case
- Moulded from heavy duty polyethylene
- Suitable for Extinguishers up to 9kg
- Water resistant seal

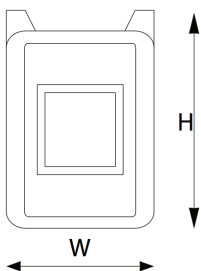
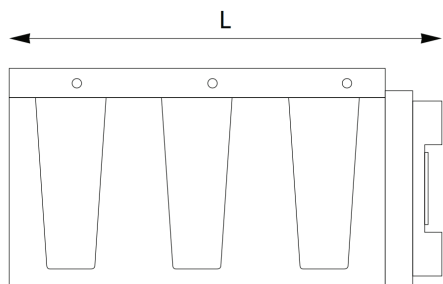


Part No.	Width (W)	Height (H)	Depth (D)	Description
CPTL22ES	320mm	650mm	640mm	Dual Purpose Extinguisher and Spill Kit Case with Brackets

Premium Fire Extinguisher Case

Product Information

- Moulded from heavy duty polyethylene
- Inspection Window on CPTL24E
- Moulded-in fixing points
- Ideally suited to the Petrochemical Industries
- Fitted with water resistant seal



CPTL24E

Part No.	Width (W)	Height (H)	Length (L)	Description
CPTL24E	250mm	290mm	735mm	9kg Fire Extinguisher Box with Window

Premium Spill Kit Box & Extinguisher-Spill Kit Combi Box

Product Information

- Inspection Window on CPTL25S & CPTL25ES
- Dual Purpose Extinguisher and Spill Kit Case
- Moulded from heavy duty polyethylene
- Suitable for Extinguishers up to 6kg
- Water resistant seal



CPTL25S



Inside CPTL25ES



CPTL25ES

Part No.	Width (W)	Height (H)	Length (L)	Description
CPTL25S	250mm	370mm	735mm	Spill Kit Box in Black, Grey or Green
CPTL25ES	250mm	370mm	735mm	Dual Purpose Spill Kit and upto 6kg Fire Extinguisher Box (RED)